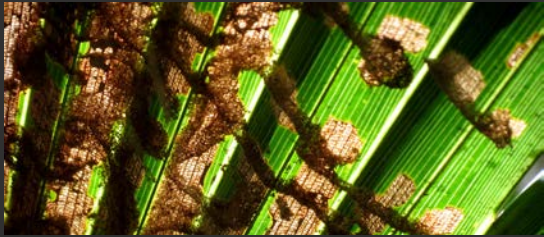


Common Florida Palm Tree Pests



Palm Leaf Skeletonizer

Afflicted Palms: *Washingtonia* and *Livistona* varieties

Damage: Comes from the caterpillars, is mostly aesthetic; the palm fronds will brown out from the midribs outward.



Red Date Scale

Afflicted Palms: *Phoenix* varieties

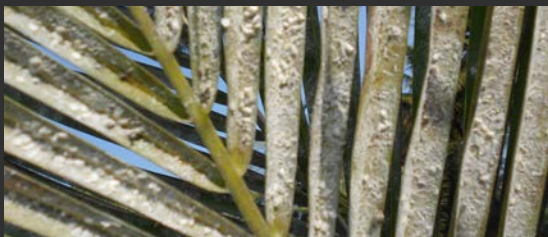
Damage: Comes from the immature "crawlers;" damage appears as white, cottony wax on the plant; the palm appears yellow and can fail if not treated.



Rugose Spiraling Whitefly

Afflicted Palms: Coconut palms, as well as other varieties

Damage: New growth appears stunted; sticky, sooty mold can appear on the fronds



Red Palm Mite

Afflicted Palms: Coconut and *Areca* Palms, as well as other fruit-producing palms

Damage: Fronds appear yellow with speckles and blotches apparent.



Palmetto Weevil

Afflicted Palms: Canary Island Date Palms, Bismark Palms, *Latan* Palms, as well as stressed nursery and transplanted palms

Damage: Comes from the larvae; the spear leaves appear stunted, and the whole head of the palm collapses.

