

Common Florida Ornamental Plant Pests

DEFOLIATORS



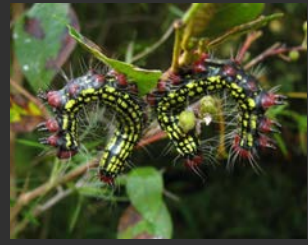
**Eastern Lubber
Grasshopper**

- Large; grow up to 3.5 inches long
- Found on Amaryllis, Crinums, and similar plant species



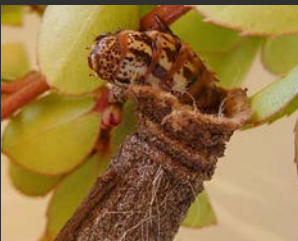
**Oleander
Caterpillar**

- Grow up to 1.5 inches long
- Found almost exclusively on Oleanders



**Azalea
Caterpillar**

- Grow up to 2 inches long
- Found almost exclusively on Azaleas



Bag Worms

- Grow on average 1.5 to 3 inches long, including bag
- Found on Indian Hawthorn, Ligustrum, Viburnum, Juniper, and Pineapple Guava



**Sri Lankan
Weevil**

- Small; 0.25 inches long
- Found on over 150 plant species, including ornamental, vegetable, and fruit species



Leaf Miners

- Tiny worm-like larvae of flies
- Found in between the epidermal layers of the leaf
- Affects Arbutus, Bougainvillea, Ixora, Hollies, and Boxwood

RASPING AND PIERCING-SUCKING PESTS



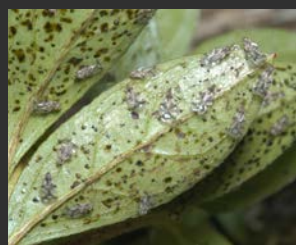
Snails & Slugs

- Appear as a variety of sizes
- Not picky; found on the new growth of a large variety of plants



Chili Thrips

- Very tiny; 0.016 to 0.024 inches long
- Found on Roses, Indian Hawthorn, Duranta, Ligustrum, Viburnum, and Camellia



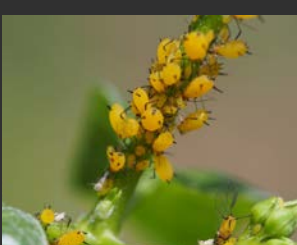
**Azalea Lace
Bug**

- Grow up to 1/10 inches long
- Found almost exclusively on Azaleas



**Pink Hibiscus
Mealybug**

- Small; grow up to 1/10 inch long
- Found on Allamanda, Bougainvillea, Croton, Heliconia, Ixora, and Oleander



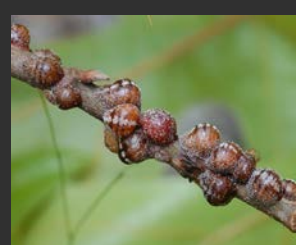
Aphids

- Tiny; grow up to 0.25 inches long
- Not picky; appear on the new growth of a variety of plants



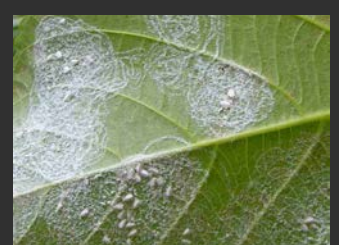
Spider Mites

- Very tiny; up to 0.02 inches long
- Found on Deciduous and Flowering Trees



Scale

- Grow up to 0.5 inches long
- Exists as both soft scale and armored scale (pictured)
- Found on



**Rugose Spirling
Whitefly**

- Grow up to 1/10 inch long
- Found on a wide variety of plants; including Palms, Woody Ornamentals, and Fruiting Plants